

ARCTIC

tested to work

FARVEGTHEDER/ COLOUR FASTNESS/ FARBECHTHEIT

/ Washing/ Waschechtheit	Note	4	
/ Perpiration/ Schweißechtheit	Note	4	
light/ Lichtechtheit	Note	-	
rad/ Rubbing, wet/ echtheit, nass (Kette/Schuss)	Note	3-4	

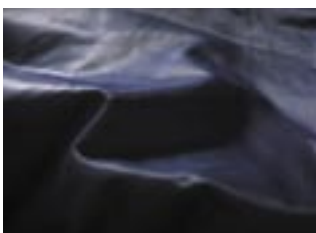


ARCTIC 62-73

MASCOT® ARCTIC

WINTERWEAR KEEPS YOU WARM

MASCOT® ARCTIC is one of the most comprehensive collections of warm and durable workwear available in the market. It protects against freezing temperatures and is specially developed for those who work outdoors in the cold winter season. The comprehensive collection includes e.g. Europe's largest range of pilot jackets. MASCOT® ARCTIC comprises undergarments in perspiration-control CoolMax® and Thermax® materials and water-repelling outerwear in Bearnylon® as well as breathable, wind and waterproof Mascotex® products.



FABRIC The products are made of selected types of polyester, cotton and nylon fabric. Mascotex® products have taped seams, which make the garments 100% waterproof.



FUNCTIONALITY MASCOT® ARCTIC meets the need for winter clothes from outerwear to undergarments. I.e. from thermal underwear and pilot jackets to bib & brace.



DETAILS Jackets, trousers, bib & brace and boiler suits are lined with either quilt or pile.



DESIGN The design is practical, strong and comfortable for outside work during cold seasons. The colours mix with the other MASCOT® collections.



ARCTIC

tested to work



QUEBEC PARKA 00510-620

60% cotton/ 40% nylon. 240 g/m². Parka in water-repellent Bearnylon® with quilted lining and pile collar. Detachable hood with quilted lining. Size XS-4XL. Navy, bottle green, black and royal.



ALASKA PILOT JACKET 00516-620

60% cotton/ 40% nylon. 240 g/m². Pilot jacket in water-repellent Bearnylon® with pile lining, pile collar and quilted sleeve lining. Two zipped breast pockets and zipped sleeve pocket. Size XS-5XL. Navy, red, bottle green, khaki, white, black and royal.



INNSBRUCK MULTI-PURPOSE JACKET 00520-620

60% cotton/ 40% nylon. 240 g/m². Multi-purpose jacket in water-repellent Bearnylon® with detachable pile lining and pile collar. Detachable sleeves with quilted lining. Size XS-4XL. Navy, red, bottle green, anthracite, black and royal.



KITZBÜHL PILOT JACKET 00522-620

60% cotton/ 40% nylon. 240 g/m². Pilot jacket in water-repellent Bearnylon® with pile lining, pile collar and quilted lining in sleeves. Two breast pockets with flaps. Size XS-4XL. Navy.



MONTREAL PARKA 00594-620

60% cotton/ 40% nylon. 240 g/m². Parka in water-repellent Bearnylon® with detachable quilted lining. Detachable hood with quilted lining. Size XS-4XL. Navy.



SÖLDEN WINTER BODYWARMER 00554-620

60% cotton/ 40% nylon. 240 g/m². Winter bodywarmer in water-repellent Bearnylon® with pile lining and collar. Size XS-4XL. Navy, red, bottle green, khaki, white, black and royal.

BEARNYLON® — UNCOMPROMISING QUALITY

ARCTIC 62-73



SIBIRIEN WINTER TROUSERS 00590-620

60% cotton/ 40% nylon. 240 g/m². Winter trousers in water-repellent Bearnylon® with quilted nylon lining. Two side pockets and back pockets. Size S-3XL. Inner seam 82 cm (32"). Navy.



THULE WINTER BOILER SUIT 00517-620

60% cotton/ 40% nylon. 240 g/m². Winter boiler suit in water-repellent Bearnylon® with pile lining, pile collar and quilted leg lining. Access to trousers underneath. Size XS-5XL. Inner seam 82 cm (32") regular. Navy, red and royal.



ANTARKTIS WINTER BIB & BRACE 00512-620

60% cotton/ 40% nylon. 240 g/m². Winter bib & brace in water-repellent Bearnylon® with quilted lining. Adjustable waistband (5 cm; 1.97 inches). Size S-4XL. Inner seam 82 cm (32"). Navy, bottle green, khaki and royal.



GRAZ PARKA 00533-650

100% polyester. 225 g/m². Parka made of breathable, wind and waterproof Mascotex® with taped seams. Quilted lining and pile collar. Detachable hood with quilted lining. Certified according to ENV343. Size XS-4XL. Navy, black and royal.



ST. MORITZ PILOT JACKET 00534-650

100% polyester. 225 g/m². Pilot jacket made of breathable, wind and waterproof Mascotex® with taped seams. Pile lining, pile collar and quilted lining in sleeves. Certified according to ENV343. Size XS-4XL. Navy, red, black and royal.



KAPRUN MULTI-PURPOSE JACKET 00535-650

100% polyester. 225 g/m². Multi-purpose jacket made of breathable, wind and waterproof Mascotex® with taped seams. Detachable pile lining and pile collar. Detachable sleeves with quilted lining. Size XS-4XL. Navy, red, bottle green, black and royal.

KAPRUN MULTI-PURPOSE JACKET 00535-650
 100% polyester. 225 g/m². Multi-purpose jacket made of breathable, wind and waterproof Mascotex® with taped seams. Detachable pile lining and pile collar. Detachable sleeves with quilted lining. Size XS-4XL. Navy, red, bottle green, black and royal.



ARCTIC
 tested to work

THE DER/	COLOUR	FASSTNESS/	FARBRECHTHEIT
t	Note	4	50 105-60
htheit	Note	4	150 105-ED
techttheit	Note		50 105-BB
id/ ruc	et/	1-4	50 105-X
tk/ n	(t) /Schuss)	Note	150 105-X12
ubbig	OPY/	3	150 105-X12



WOLFURT OUTER TROUSERS 07190-650

100% polyester. 225 g/m². Outer trousers in breathable, wind and waterproof Mascotex® with lining and taped seams. Certified according to ENV343. Size S-4XL. Inner seam 82 cm (32"). Navy.

GUARANTEED WATERPROOF AND BREATHABLE

Rainy, windy weather can make anybody's life miserable, especially if water and cold are allowed to reach the body. Mascotex® was designed for rough weather. Specially taped seams make jackets and trousers 100% waterproof. The products are tested daily in workplaces all over Europe. The feedback is positive: Mascotex® keeps its promises.



WILDON OUTER BIB & BRACE 07192-650

100% polyester. 225 g/m². Outer bib & brace in breathable, wind and waterproof Mascotex® with lining and taped seams. Certified according to ENV343. Size S-4XL. Inner seam 82 cm (32"). Navy.



LECH WINTER BIB & BRACE 00592-650

100% polyester. 225 g/m². Winter bib & brace made of breathable, wind and waterproof Mascotex® with taped seams. Quilted lining. Adjustable waistband 5 cm; 1.97 inches). Certified according to ENV343. Size S-4XL. Inner seam 82 cm (32"). Navy.



SAALBACH WINTER BOILER SUIT 00518-650

100% polyester. 225 g/m². Winter boiler suit made of breathable, wind and waterproof Mascotex® with taped seams. Pile lining, pile collar and quilted leg lining. Access to trousers underneath. Certified according to ENV343. Size XS-4XL. Inner seam 82 cm (32"). Navy.



RIGA CLIMATIC PILE JACKET 00543-600

95% polyester / 5% acrylic. 370 g/m². Climatic pile jacket that zips right through. Contrasting water-repellent Bearnylon® reinforcement at shoulders, outside collar, elbows and side pockets. Windproofed lining at sleeves. Size XS-4XL. Grey/navy, grey/red, grey/royal.



LONDON THERMAL JACKET 00515-450

100% polyester. 250 g/m². Quilted thermal jacket with rear protection. Two large patch pockets. Size XS-4XL. Navy.



LIVERPOOL THERMAL BODYWARMER 00565-450

100% polyester. 250 g/m². Quilted thermal bodywarmer with rear protection. Two large patch pockets. Size XS-4XL. Navy.

MASCOT® ARCTIC – BETTER AT KEEPING YOU WARM

MASCOT® ARCTIC also includes pile jackets and quilted thermal jackets and vests. All garments have zips right through and plenty of details. Thermal jackets and vests in quilted materials have ultra-sound welded seams for extra durability and to avoid broken threads.



KLAKSVIK PILE JACKET 00547-710

95% polyester / 5% acrylic. 320 g/m². Pile jacket that zips right through. Pile on the outside. Water-repellent Bearnylon® reinforcement at shoulders, outside collar, elbows and side pockets. Windproofed lining at front and sleeves. Size XS-4XL. Navy.



THORSHAVN PILE JACKET 00506-710

95% polyester / 5% acrylic. 320 g/m². Pile jacket that zips right through. Pile on the outside. Two large patch pockets. Size XS-4XL. Navy.



REYKJAVIK PILE JACKET 00508-710

95% polyester / 5% acrylic. 320 g/m². Pile jacket with long back. Zip right through. Pile on the outside. Size XS-4XL. Navy.



TIFFANY WINTER JACKET 02791-390

100% polyester. 350 g/m². Quilted winter jacket with detachable sleeves. Elastic drawstring cord adjustable at both sides. Size XS-4XL. Navy, anthracite and black.

Double storm flap and hook & loop fastening

Adjustable drawstring Cord



BRISTOL THERMAL JACKET 01252-490

100% polyester. 250 g/m². Quilted thermal jacket that zips right through. Breast pocket and two side pockets with zips. All zips in silver colour. Size XS-4XL. Black.



BOLTON THERMAL VEST 01423-490

100% polyester. 250 g/m². Quilted thermal vest that zips right through. Breast pocket and two side pockets with zips. All zips in silver colour. Size XS-4XL. Black.

ARCTIC
tested to work



DUNDEE THERMAL JACKET 00525-590

100% polyester. 250 g/m². Quilted thermal jacket with rear protection and high collar in ribbed knit. Two large front pockets. Size XS-4XL. Navy.



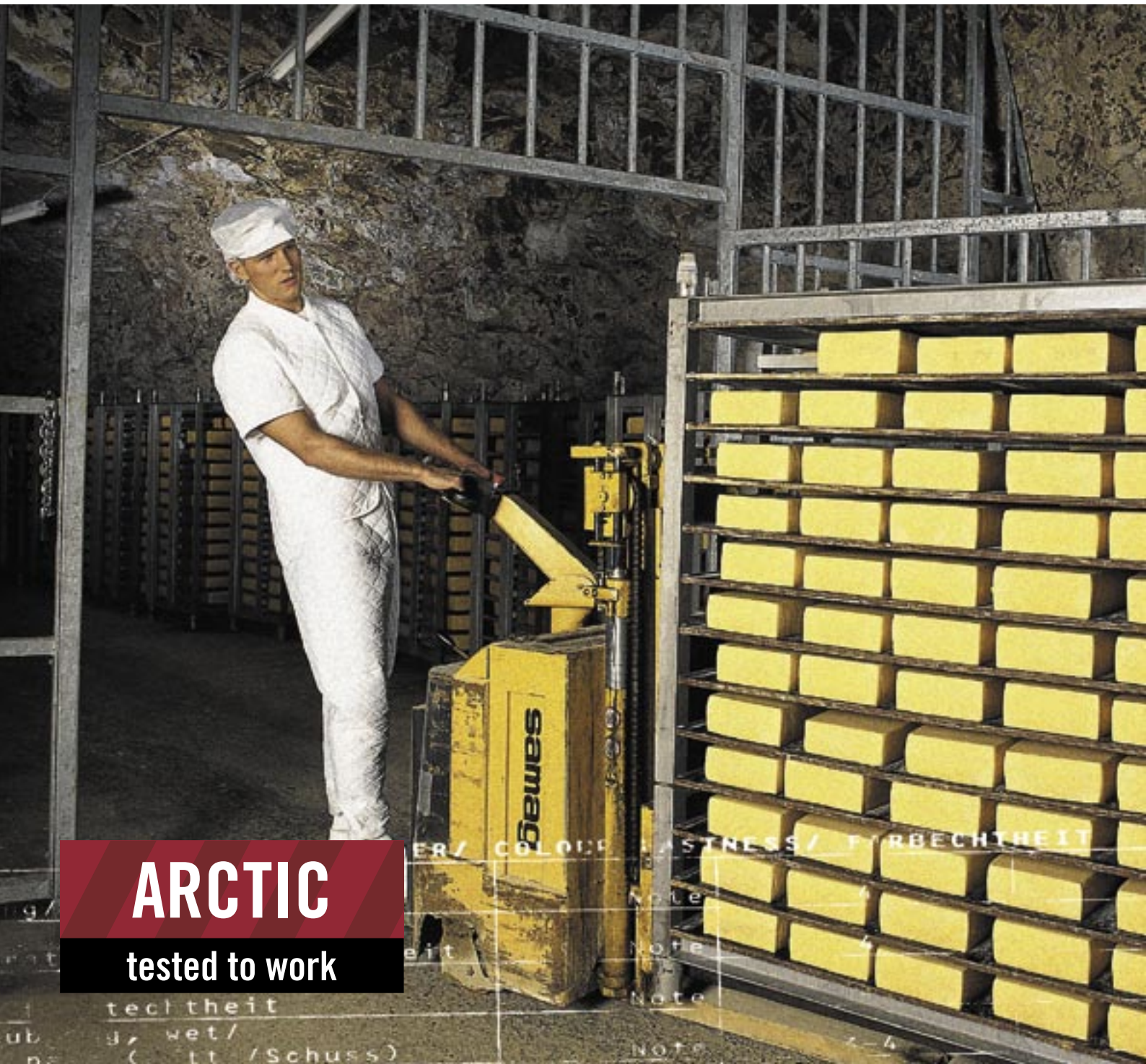
DUBLIN THERMAL BODYWARMER 02725-590

100% polyester. 250 g/m². Quilted thermal bodywarmer with rear protection and high collar. Two large front pockets. Size XS-4XL. Navy.



BERGEN THERMAL JACKET 00501-300

100% nylon. 180 g/m². Quilted thermal jacket with extended back. Size XS-4XL. Navy.



ARCTIC

tested to work



TRONDHEIM THERMAL BODYWARMER 00551-300

100% nylon. 180 g/m². Quilted thermal bodywarmer with extended back. Size XS-4XL. Navy.



OSLO THERMAL TROUSERS 00571-300

100% nylon. 180 g/m². Quilted thermal trousers with fly, elasticated waist and knitted cuffs at ankles. Size XS-4XL. Navy.



AMSTERDAM HOT WASH THERMAL JACKET 00528-370

100% polyester. 300 g/m². Quilted thermal jacket with extended back. Hot wash at 95°C. Size XS-4XL. White.



EINDHOVEN HOT WASH THERMAL JACKET 00546-370

100% polyester. 300 g/m². Quilted thermal jacket with extended back and short sleeves. Hot wash at 95°C. Size XS-4XL. White.



ROTTERDAM HOT WASH THERMAL TROUSERS 00578-370

100% polyester. 300 g/m². Quilted thermal trousers with fly, elasticated waist and ribbed knit cuffs at ankles. Hot wash at 95°C. Size XS-4XL. White.



HAAG HOT WASH THERMAL BODYWARMER 00548-370

100% polyester. 300 g/m². Quilted thermal bodywarmer with extended back. Hot wash at 95°C. Size XS-4XL. White.



FROM UNDER-GARMENTS TO OUTERWEAR



KIRUNA THERMAL UNDERSHIRT 00573-350

100% polyester. 190 g/m². Single-layer thermal undershirt made of CoolMax® with round neckline and long sleeves. Size S-3XL. Navy.

If you want to keep the cold at bay, you have to begin with your underwear. MASCOT's perspiration-control CoolMax® and Thermax® underwear maintains the right body temperature regardless of the weather conditions. Coolmax® are single-layer thermal undergarments that transport moisture and perspiration. Thermax® are triple-layer thermal undergarments. The ribbed towelling channels perspiration away from the body and out to the cotton and modal fibres, which absorb perspiration.



MOTALA THERMAL UNDERSHIRT 00595-350

100% polyester. 190 g/m². Single-layer thermal undershirt made of CoolMax® with turtleneck, short zip and long sleeves. Size S-3XL. Navy.



KALIX THERMAL UNDERSHIRT 00597-350

100% polyester. 190 g/m². Single-layer thermal undershirt made of CoolMax® with round neckline and short sleeves. Size S-3XL. Navy.



MORA THERMAL UNDER TROUSERS 00583-350

100% polyester. 190 g/m². Single-layer thermal under trousers made of CoolMax®, without fly. Size S-3XL. Navy.



ALTA THERMAL UNDER TROUSERS 00572-350

100% polyester. 190 g/m. Single-layer thermal under trousers made of CoolMax®, with fly. Size S-3XL. Navy.



LUDVIKA THERMAL UNDERSHIRT 00596-380

55% polyester / 23% modal / 22% cotton. 260 g/m². Triple-layer thermal undershirt made of Thermax® with turtleneck, short zip and long sleeves. Size S-3XL. Navy.



KUMLA THERMAL UNDERSHIRT 00797-380

55% polyester / 23% modal / 22% cotton. 260 g/m². Triple-layer thermal undershirt made of Thermax® with round neckline and short sleeves. Size S-3XL. Navy.



UPPSALA THERMAL UNDERSHIRT 00585-380

55% polyester / 23% modal / 22% cotton. 260 g/m². Triple-layer thermal undershirt made of Thermax® with round neckline and long sleeves. Size S-3XL. Navy.



ARLANDA THERMAL UNDER TROUSERS 00586-380

55% polyester / 23% modal / 22% cotton. 260 g/m². Triple-layer thermal under trousers made of Thermax®, with fly. Size S-3XL. Navy.

