

# Use functional underwear that breathes and keeps you warm!

## Coolmax underwear

A thin "super" fabric, which transports the moist away from the body. This is a base layer to wear closest to the body. We chose Coolmax to give the best functionality. Excellent fit.  
Material: 100% polyester (48% Coolmax). Vikt: 145 g/m<sup>2</sup>.

Size: S - XXXL

OrderNo: 980069 Functional shirt, coolmax, navy blue  
980099 Functional shirt, coolmax, black  
980169 Underpants, coolmax, navy blue  
980199 Underpants, coolmax, black



**NEW!**



### Layer on layer or the multilayer principle

Many of us dress according to this principle when we are performing leisure activities, but forget our knowledge and go back to old solutions when working. If you work in an office, that is probably no problem, but if you work outside, it is of great importance to dress functionally. If you do not dress right you will easily get tired and frozen!

When you are physically active and your body produces moist and heat, you will have difficulties to concentrate and you feel uncomfortable. If you sweat a lot in old-fashioned underwear they will get wet and you will be cold later on. Björnkåder's underwear will help you to be more comfortable.

The main object of the base layer is to transport moist away from your skin, the middle layer gives you warmth and ventilates/ transports the moist further away. The outer layer should protect you against wind and rain as well as it should be breathable to avoid having the moist staying on the inside of the garment.

# Underwear in breathable channel terry!



**NEW!**



## Channel terry underwear

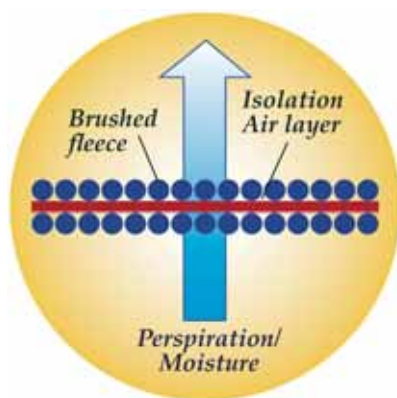
Channel terry underwear can be used both as base layer and middle layer. The channels bind more air and give more heat than the thinner types of underwear. The fabric is however also moist transporting. If you are highly active all the time, we recommend the thinner underwear, but if you have different levels of activity during the day this is the garment for you. Material; 100% wicking polyester. Weight: 280 g/m<sup>2</sup>.

Size: S - XXXL

- OrderNo: 982169 Functional shirt, channel terry, navy blue
- 982199 Functional shirt, channel terry, black
- 982069 Zip polo, channel terry, navy blue
- 982099 Zip polo, channel terry, black
- 982269 Underpants, channel terry, navy blue
- 982299 Underpants, channel terry, black



# Underwear in microfleece.



**NEW!**



## Microfleece underwear

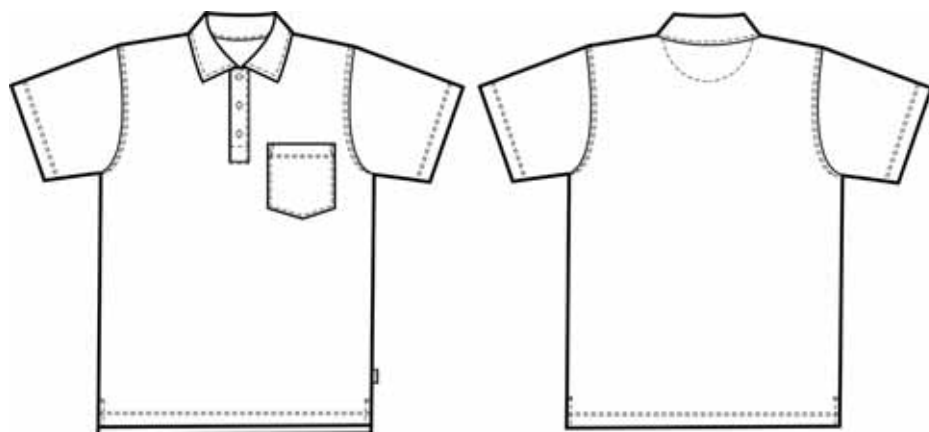
Micro fleece belongs to the middle layer if you dress according to the several layer principle. It is an insulating layer, which lets the moist from the base layer through. The zipper in the shirt lets you open up and let out some heat if you like. Material: 100% micropolyester. Weight: 150 g/m<sup>2</sup>.

Size: S - XXL

OrderNo: 983069 Zip polo, microfleece, navy blue  
 983099 Zip polo, microfleece, black  
 983169 Underpants, microfleece, navy blue  
 983199 Underpants, microfleece, black



# Functional polo shirt



**NEW!**



## Functional polo shirt

The polo shirt of the 21st century! In contrast to cotton it has a high moist transporting capability and dries quickly. Classic model with breast pocket.  
Material: 100% quick drying wicking polyester.  
Weight 200 g/m<sup>2</sup>.

Size: S - XXXL

OrderNo: 230169 Navy blue  
230199 Black



# Windproof jacket

## Windproof jacket

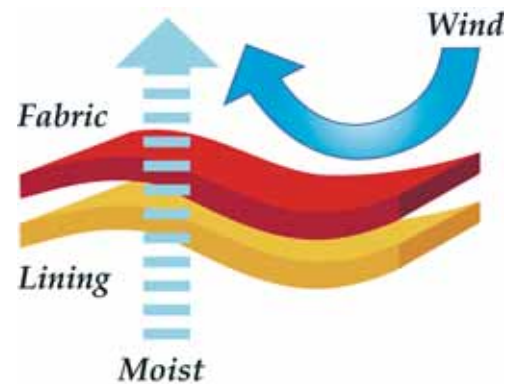
Windproof lined jacket. The fabric is breathable. Is perfect if you move a lot between the inside and outside. A stitched fabric, which gives a sweater feel. Material: 100% polyester. Weight: 280 g/m<sup>2</sup>.

Size: XS - XXXL

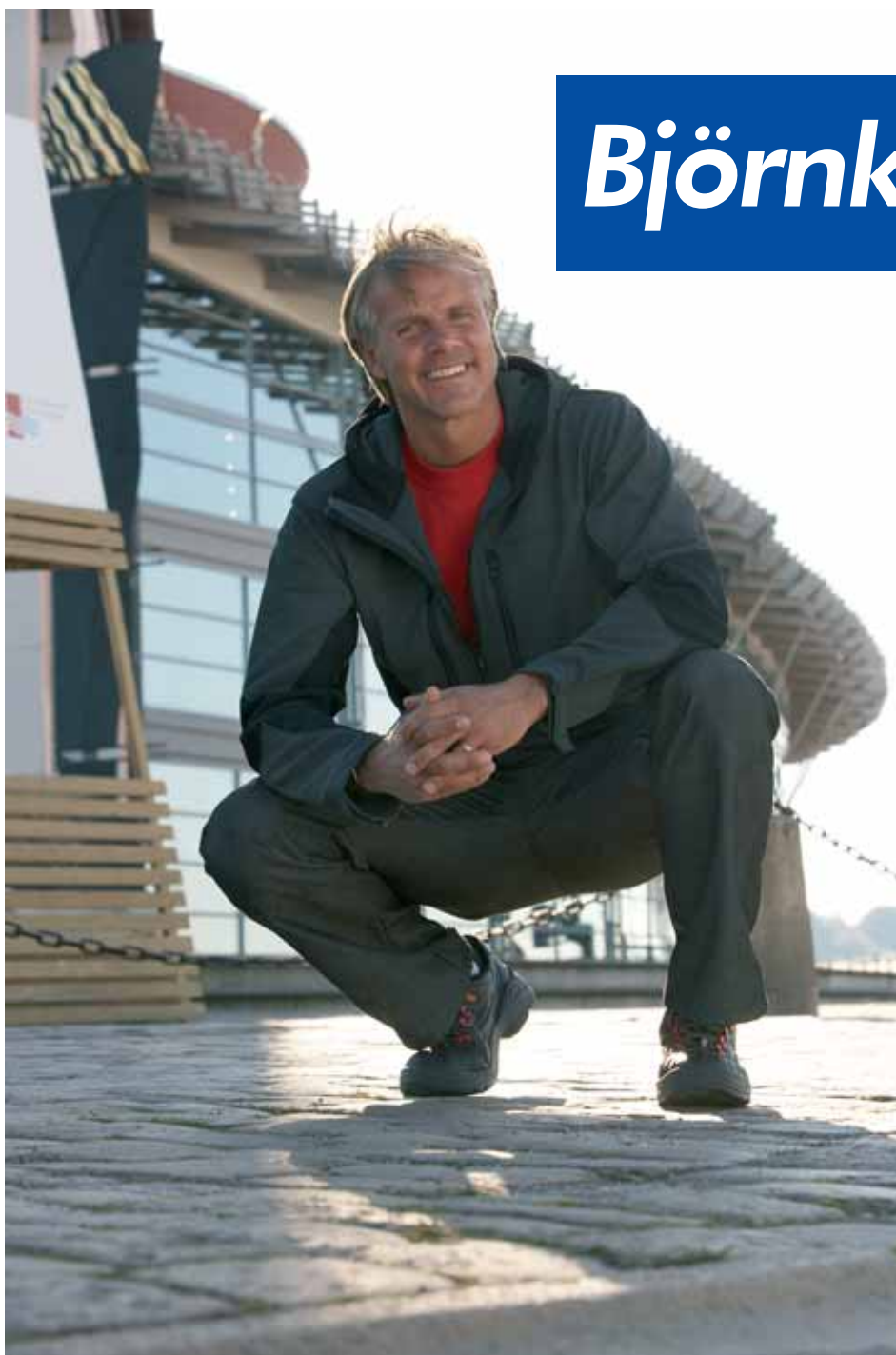
OrderNo: 100038 Dark grey/black  
100099 Black/dark grey



**NEW!**



# Soft Shell jacket



## Soft Shell jacket

Wind and waterproof abilities combined with good breathability make this garment very allround. Seams are however not sealed. We have added a hood for tough conditions. Stretch for high mobility. This is the usually the most outer garment when you dress according to the several-layer-principle. Material: 100% polyester. Weight: 370 g/m<sup>2</sup>. Water gauge: 3 000 mm. Breathability: 3 000 g/m<sup>2</sup>/24 hours.

Size: S - XXL

OrderNo: 100138



**NEW!**



